

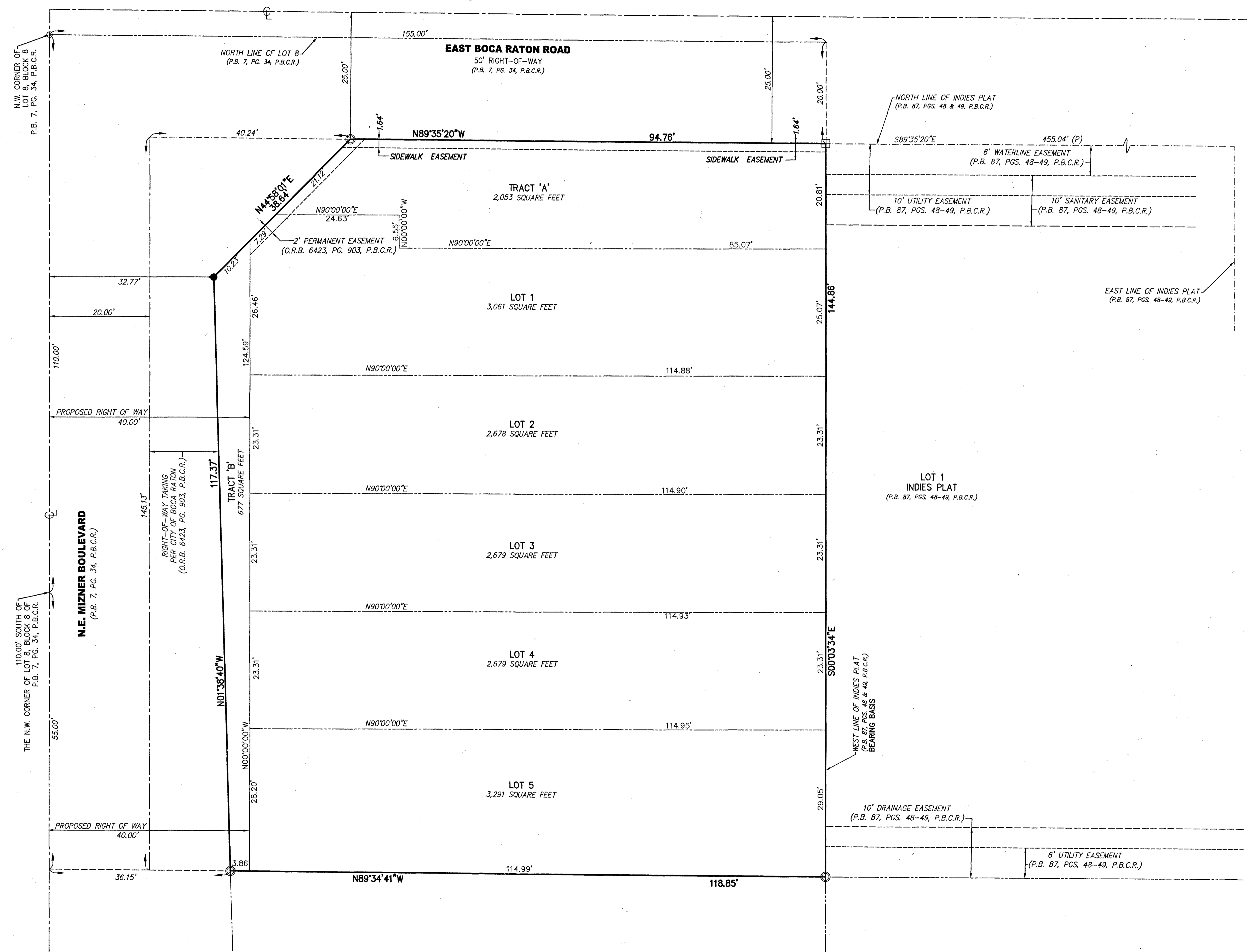
134

SHEET 2 OF 2 SHEETS

THIS INSTRUMENT WAS PREPARED BY:  
 JOHN T DOOGAN, P.L.S.  
**AVIROM & ASSOCIATES, INC.**  
 SURVEYING & MAPPING  
 50 S.W. 2nd AVENUE, SUITE 102  
 BOCA RATON, FLORIDA 33432  
 (561) 392-2594  
 JANUARY 2023

# REVE DEL MIZNER PLAT

BEING A REPLAT OF A PORTION OF LOT 8, BLOCK 8, RICKARD'S SURVEY OF BOCA RATON, FLORIDA, ACCORDING TO THE PLAT THEREOF AS RECORDED IN PLAT BOOK 7, PAGE 34, OF THE PUBLIC RECORDS OF PALM BEACH COUNTY, FLORIDA.  
 SAID LANDS LYING IN SECTION 20, TOWNSHIP 47 SOUTH, RANGE 43 EAST, CITY OF BOCA RATON, PALM BEACH COUNTY, FLORIDA.



TABULAR DATA		
LOT 1	3,061 SQUARE FEET	0.0703 ACRES
LOT 2	2,678 SQUARE FEET	0.0615 ACRES
LOT 3	2,679 SQUARE FEET	0.0615 ACRES
LOT 4	2,679 SQUARE FEET	0.0615 ACRES
LOT 5	3,291 SQUARE FEET	0.0756 ACRES
TRACT 'A'	2,053 SQUARE FEET	0.0471 ACRES
TRACT 'B'	677 SQUARE FEET	0.0155 ACRES
<b>TOTAL AREA OF PLAT</b>	<b>17,118 SQUARE FEET</b>	<b>0.3930 ACRES</b>

- SURVEYOR'S NOTES:**
- NO BUILDINGS OR ANY KIND OF CONSTRUCTION OR TREES OR SHRUBS SHALL BE PLACED ON ANY EASEMENT WITHOUT PRIOR WRITTEN APPROVAL OF ALL EASEMENT BENEFICIARIES AND ALL APPLICABLE CITY APPROVALS OR PERMITS AS REQUIRED FOR SUCH ENCROACHMENTS.
  - BEARINGS SHOWN HEREON ARE ASSUMED BASED ON THE WEST LINE OF LOT 1, P.B. 87, PG. 48, P.B.C.R., HAVING A BEARING OF S00°03'34"E.
  - DIMENSIONS SHOWN HEREON ARE IN FEET AND DECIMAL PARTS THEREOF AND ARE BASED ON THE DEFINITION OF FOOT AS ADOPTED BY THE UNITED STATES BUREAU OF STANDARDS AND REFER TO THE HORIZONTAL PLANE.
  - ABBREVIATION LEGEND: C = CENTERLINE; L.B. = LICENSED BUSINESS; L = ARC LENGTH; O.R.B. = OFFICIAL RECORDS BOOK; P.B. = PLAT BOOK; P.B.C.R. = PALM BEACH COUNTY RECORDS; PG(S). = PAGE(S); P.L.S. = PROFESSIONAL LAND SURVEYOR; PRM = PERMANENT REFERENCE MONUMENT; R = RADIUS.
  - - INDICATES SET PERMANENT REFERENCE MONUMENT, A 5/8"x18" IRON ROD WITH A CAP STAMPED "PRM AVIROM LB 3300"
  - - INDICATES SET NAIL & DISC, STAMPED "PRM AVIROM LB 3300".
  - ◻ - INDICATES FOUND 4"x4" CONCRETE MONUMENT WITH CAP STAMPED "PRM LB. 6456".

**NOTICE:**  
 THIS PLAT AS RECORDED IN ITS GRAPHIC FORM, IS THE OFFICIAL DEPICTION OF THE SUBDIVIDED LANDS DESCRIBED HEREIN AND WILL IN NO CIRCUMSTANCES BE SUPPLANTED IN AUTHORITY BY ANY OTHER GRAPHIC OR DIGITAL FORM OF THE PLAT. THERE MAY BE ADDITIONAL RESTRICTIONS THAT ARE NOT RECORDED ON THIS PLAT THAT MAY BE FOUND IN THE PUBLIC RECORDS OF THIS COUNTY.

**AVIROM & ASSOCIATES, INC.**  
**SURVEYING & MAPPING**  
 50 S.W. 2ND AVENUE, SUITE 102  
 BOCA RATON, FLORIDA 33432  
 TEL: (561) 392-2594, FAX (561) 394-7125  
 www.AVIROM-SURVEY.com

©2021 AVIROM & ASSOCIATES, INC. all rights reserved.  
 This sketch is the property of AVIROM & ASSOCIATES, INC.  
 and should not be reproduced or copied without written permission.